

Desktop Label Printer  
Outstanding Series

**OS-2140** 203dpi



**OS-2140D** 203dpi



**OS-214plus** 203dpi



**OS-314plus** 300dpi

NEW



Specifications	OS-2140	OS-2140D	OS-214plus	OS-314plus
Printing Method	Direct Thermal / Thermal Transfer	Direct Thermal	Direct Thermal / Thermal Transfer	
Printing Resolution	203 dpi (8 dots/mm)			300 dpi(12 dots/mm)
Printing Speed	Up to 5 ips (127mm/s)	Up to 5 ips (127mm/s)	Up to 4 ips(102mm/s)	Up to 4 ips(102mm/s)
Printing Length	Max100"(2540mm)	Max 100"(2540mm)	Max 43"(1092mm)	Max 50" (1270 mm)
Printing Width	Max 4.16"(105mm)	Max 4.16"(105mm)	Max 4.16"(105mm)	Max 4.1"(104mm), Min 1"(25.4mm)
Memory	8MB DRAM(6MB user available) · 4MB Flash ROM(2MB user available)		8MB DRAM(7MB user available) · 4MB Flash ROM(3MB user available)	8MB DRAM(5MB user available) · 4MB Flash ROM(2MB user available)
CPU Type	32 bit RISC microprocessor			
Media Sensor	Media gap & black line Reflective sensor			
Operation Interface	LED indicator (Power/Ready)x 2 · Button (Feed) x 1			
Communication Interface	RS-232, USB		Centronics Parallel, RS-232, USB	
Fonts	Internal character sets standard 5 alpha-numeric fonts from 0.049"H ~ 0.23" H (1.25mm ~ 6.0mm) Internal fonts are expandable up to 24x24 4 direction 0 ~ 270 rotation Soft fonts are downloadable, Ability to print Windows True Type Font easily(OS-2140D only)			
1D Barcodes	PPLA:Code 39, UPC-A, UPC-E, Code 128 subset A/B/C, EAN-13, EAN-8, HBIC, Codabar, Plessey, UPC2, UPC5, Code 93, Postnet, UCC/EAN-128, UCC/EAN-128 K-MART, UCC/EAN-128 Random Weight, Telepen, FIM, Interleave 2 of 5 (Standard/with modulo 10 checksum/with human readable check digit/with modulo 10 checksum & shipping bearer bars), GS1 Data bar (RSS) PPLB:Code 39 Std. & Extended, UPC-A, UPC-E, Matrix 2 of 5, UPC-Interleaved 2 of 5, Code 39 with check sum digit, Code 93, EAN-13, EAN-8 (Standard, 2 /5digit add-on), Codabar, Postnet, Code128 subset A/B/C, Code 128 UCC (shipping container code), Code 128 auto, UCC/EAN code 128 (GS1-128), Interleave 2 of 5, Interleaved 2 of 5 with check sum, Interleaved 2 of 5 with human readable check digit, German Postcode, Matrix 2 of 5, UPC, Interleaved 2 of 5, EAN-13 2/5 digit add-on, UPCA 2/5 digit add-on, UPCE 2/5 digit add-on, GS1 Data bar (RSS) PPLZ (OS-2140Z / OS-2140DZ):Code39, UPC-A, UPC-E, Postnet, Code128 subset A/B/C, Interleave 2 of 5, Interleaved 2 of 5 with check sum, Interleaved 2 of 5 with human readable check digit, Code 93, Code 39 with check sum digit, MSI, EAN-8, Codabar, Code 11, EAN-13, Plessey, GS1 Data bar (RSS), Industrial 2 of 5, Standard 2 of 5, Logmars			
2D Barcodes	PPLA / PPLZ (OS-2140Z / OS-2140DZ): MaxiCode, PDF417, Data Matrix (ECC 200 only), QR code, Composite Codes, Aztec, Micro PDF 417 PPLB: MaxiCode, PDF417, Data Matrix (ECC 200 only), QR code, Composite Codes, Aztec		PPLA / PPLB: MaxiCode, PDF417, Data Matrix (ECC 200 only), QR code, Composite Codes, Aztec	
Graphics	PPLA / PPLB: PCX, BMP, IMG, HEX, GDI, Binary raster(PPLB Only) PPLZ (OS-2140Z / OS-2140DZ): GRF, HEX, GDI		PPLA: PCX, BMP, IMG, HEX, GDI PPLB: PCX, Binary raster, GDI (files can be converted to PCX file in the printer utility)	
Emulation	PPLA / PPLB / PPLZ		PPLA / PPLB	
Software - Label editing	Windows Driver (Win XP/Vista/Windows 7/8/10) BarTender® from Seagull Scientific			
Software - Utility	Printer Utility, Font Utility			
Media Type	Roll-feed, die-cut, continuous, fan-fold, tags, ticket in thermal paper or plain paper			
Media	Max Width:4.33"(110mm) Min Width:1"(25.4mm) Thickness:0.0025"-0.01"(0.0635-0.254mm)** Max roll capacity(OD): 4.3"(109mm) Core size: 0.5"(12.7mm) / Max roll capacity(OD): 4.3"(109mm) 1"(25.4mm) Optional / Max roll capacity(OD): 3.8"(96.5mm) 1.5"(38.1mm) Optional			
Ribbon	Ribbon Width: 1"-4" Ribbon roll – max OD: 1.45"(37mm) Ribbon Length: max 92m Core size – ID: 0.5"(13mm) with notch, Wax, Wax/Resin, Resin (Outside Ribbon)	N/A	Ribbon Width: 1"-4" Ribbon roll – max OD: 1.45"(37mm) Ribbon Length: max 92m Core size – ID: 0.5"(13mm) with notch, Wax, Wax/Resin, Resin (Outside Ribbon)	
Dimensions	W 186mm x H 165mm x L 278mm			W 189mm x H 155mm x L 285mm
Weight	2.0Kgs			1.95kgs
Power Source	Universal Switching Power Supply Input: 100V~240V±10%, 1.5A, 50~60Hz, Output: 24VDC, 2.9A			Universal Switching Power Supply Input: 100V~240V±10%, 1.8A, 50~60Hz, Output: 24VDC, 2.5A
Operation Environment	Operation Temperature: 40°F~100°F (4°C~38°C), 0% ~ 90% non-condensing, Storage Temperature: -4°F~122°F (-20°C~50°C)			
Optional Items	Cutter, Stacker, RTC Card		Cutter, Stacker, RTC Card, 4M Asian Font Card(Traditional Chinese, Simplified Chinese, Korean and Japanese)	
Agency Listing	CE, FCC, cTUVus, CCC, RoHS		CE, FCC, CCC, RoHS, BSMI	



# Desktop Label Printer Outstanding Series

## Features

- 300dpi high and 203dpi low resolution models available
- Centronics Parallel, RS-232, and USB interfaces available
- Durable and easy maintenance : only 10 screws disassemble entire unit
- Snap-in thermal print head loads in 2 seconds
- Easy media loading & ribbon installation
- Detachable top cover for kiosk and other special applications
- PPLA, PPLB, PPLZ emulations available
- Support 1D/GS1 Data bar, 2D/Composite codes and QR barcodes
- Full range of options :Cutter, stacker, memory card, font card, RTC

## Applications

- Postal & mailing
- Patient Tracking
- Laboratory specimen labeling
- Shipping & receiving
- Inventory labeling
- Retail tag
- Document labeling
- Stationary labeling
- Parts making
- Electronics parts labeling
- Apparel labeling
- Jewelry labeling

# ARGOX

*Empower the Barcode*



## Product Values

OS-2140



OS-214plus



OS-314plus



### OS-2140 / OS-2140D

The OS-2140 / OS-2140D printer provides advanced functions and performance in a durable, space-saving design. A rapid print speed of 5 inches per second ensures increased efficiency and the large 4M Flash and 8M DRAM onboard memory handles a broad range of applications. It also offers extended printing length of up to 100-inches to facilitate a wide range of media. The USB interface ensures compatibility with a variety of computers and other devices. Other improvements include much quieter printing compared with other printers in this class. The printer's durable, high-impact ABS housing and all-metal print mechanism assure years of dependable performance. The printer supports 1D/GS1 Data Bar, 2D/Composite codes and QR barcodes. Style, ease-of-use, space-savings, price, and printing performance are what define the new OS-2140 / OS-2140D printer.

### OS-214plus

The OS-214plus is the newest generation of Argox's most successful medium volume printer model. Its attractive and stylish design is just one of several new features and advanced functions. The significantly larger onboard memory increases print capability for producing a wider range of label applications. A full-speed USB interface adds flexibility for use with any of today's notebook and other computers. Its space-saving design offers the same small footprint and light weight as previous models for easy and convenient placement. The new OS-214plus maintains Argox's leading position as the industry standard for style, price, and performance.

\*Maximum Default Delay Time to Sleep (minutes): 5

### OS-314plus

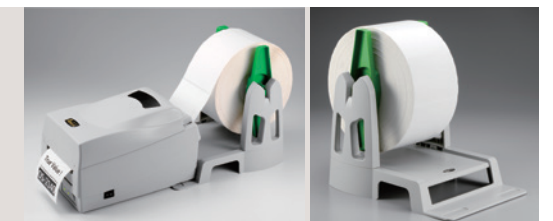
The OS-314plus desktop barcode printer offers advanced functions and features in an attractive, space-saving design. A 300dpi thermal transfer printer, the OS-314plus provides up to 4ips print speed and multiple interfaces for meeting low-to-mid volume printing demands, and also supports PPLA/PPLB emulations. New features include a more secure, yet easy-to-open cover lock and saw tooth and blade tear-off bars for both thick and thin paper. This printer is perfect for applications such as 2D barcode labels, apparel labels, and jewelry labels printing, and its top cover also detached to support use in kiosks and other special applications. Standalone applications require only an optional scanner. Other printer options include a cutter, an RTC, and an 8-inch OD stacker, and a 4M Asian Font Card. The new OS-314plus delivers enhanced features, excellent performance, and out-standing value.



> Cutter mode



> Standalone mode with scanner



> External media stacker for 8" OD paper roll